



# ENDING THE OVERDOSE CRISIS IN MASSACHUSETTS

A COMMUNITY FRAMEWORK  
FOR CHANGE

JANUARY 23, 2024



COMMUNITY  
BASED CARE



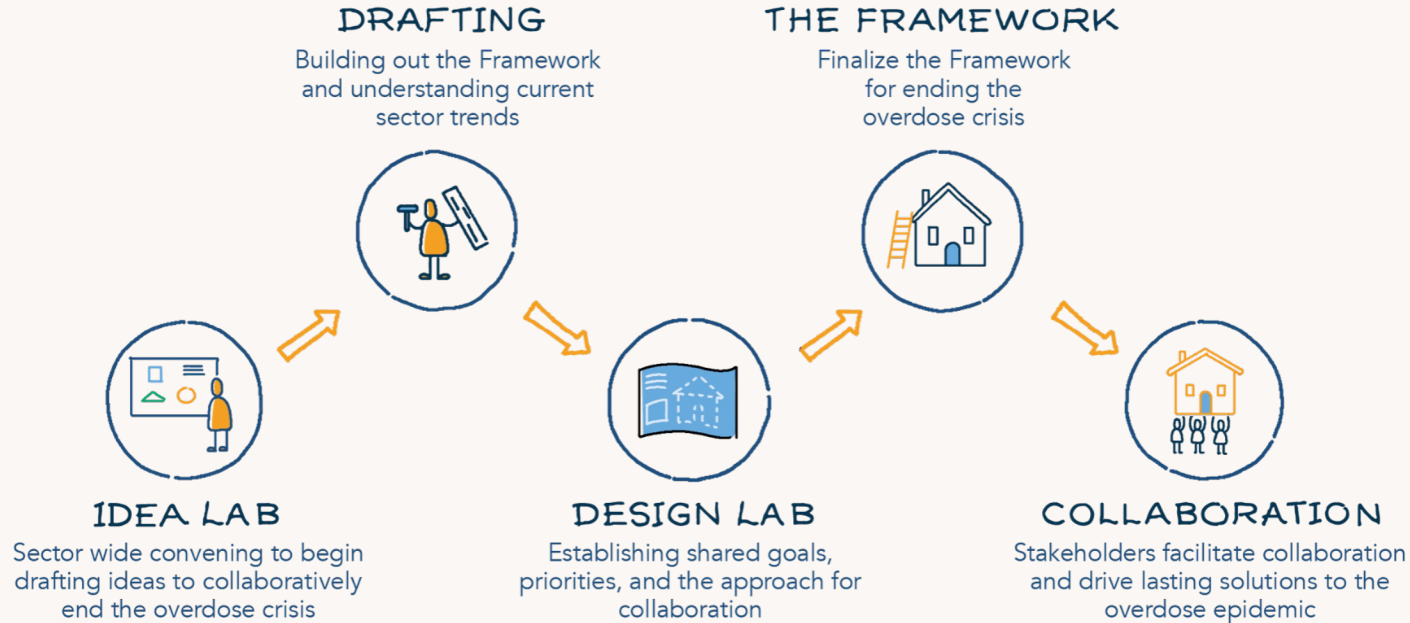
NARROW  
the  
GAP

BOLSTER  
WORKFORCE

ENGAGE  
DIRECTLY

HOLISTIC  
APPROACH

# THE PROCESS



# GUIDING PRINCIPLES

## CENTER

THE VOICES OF PEOPLE WITH LIVED  
AND LIVING EXPERIENCE

## ENSURE

EFFORTS ARE INFORMED BY  
COMMITMENTS TO EQUITY, INCLUSION,  
AND COMPASSION

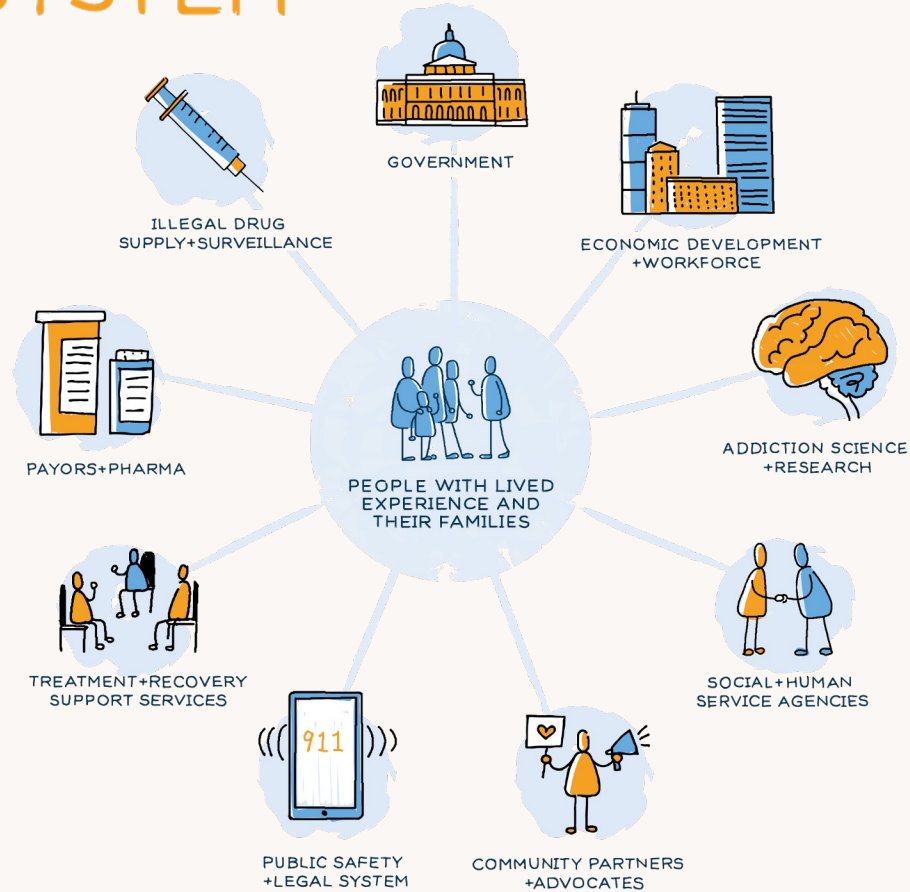
## WORK

TO REDUCE STIGMA

## ADVOCATE

FOR APPROACHES THAT SUPPORT PEOPLE  
IN UNDERSTANDING AND ACHIEVING THEIR  
OWN GOALS REGARDING HARM REDUCTION,  
TREATMENT, AND RECOVERY

# THE ECOSYSTEM





# THE ECOSYSTEM



# GOALS + STRATEGIES



# STRATEGIES



1.1 Build a fellowship of diverse and engaged thought leaders and policy makers centered on inclusive and innovative tactics, policies, and programming.



1.2 Incentivize risk taking, disrupt the status quo, remove barriers to creative thinking, and consider emerging evidence and evidence-based approaches.



1.3 Identify and replicate approaches that are making progress toward ending the overdose crisis.



2.1 Build upon best practices for engagement and develop appropriate incentives for participation.



2.2 Support change by engaging directly with people in recovery, people who use drugs, and community-based organizations that work directly with these populations.



2.3 Better understand who is being engaged and how, and how to 1) avoid an "extractive" approach, 2) ensure authenticity and transparent communications, and 3) acknowledge contributions.

## SUPPORT INNOVATION

Create change by fostering conditions for innovation in systems and structures.



## ENGAGE DIRECTLY

Create change by rebalancing power in service of a healthier and more equitable ecosystem by intentionally including PWLE and communities that have been marginalized.



## BOLSTER THE WORKFORCE

Create change by supporting the current and future workforce.



## COORDINATE ADVOCACY

Create change by identifying both the story and the counter-story for high leverage advocacy.



4.3 Advocate for recovery friendly workplaces that acknowledge and support the varying needs of individuals in recovery to feel safe and able to fulfill their job responsibilities.



4.2 Understand the support, benefits, and structures the current workforce needs to practice their own care and compassion so they may practice care and compassion for others.



4.1 Create multiple entry points into the workforce and build and maintain easy to navigate pathways for training, education, and credentialing, bolstered by incentivized, ongoing support and mentorship.



3.3 Leverage learning, influence, and resources to expand reach and increase capacity for statewide mobilization.



3.2 Develop collaborative relationships with subject matter experts (including PWLE, elected/appointed officials, media outlets and influencers, and other external partners) to influence messaging and attention of the issue.



3.1 Influence policy through advocacy and funding in targeted areas.



# SUPPORT INNOVATION

Create change by fostering conditions for innovation in systems and structures.



## 1.1

Build a fellowship of diverse and engaged thought leaders and policy makers centered on inclusive and innovative tactics, policies, and programming.



## 1.2

Incentivize risk taking, disrupt the status quo, remove barriers to creative thinking, and consider emerging evidence and evidence-based approaches.



## 1.3

Identify and replicate approaches that are making progress toward ending the overdose crisis.



# ENGAGE DIRECTLY

Create change by rebalancing power in service of a healthier and more equitable ecosystem by intentionally including PWLE and communities that have been marginalized.



## 2.1

Build upon best practices for engagement and develop appropriate incentives for participation.



## 2.2

Support change by engaging directly with people in recovery, people who use drugs, and community-based organizations that work directly with these populations.



## 2.3

Better understand who is being engaged and how, and how to 1) avoid an “extractive” approach, 2) ensure authenticity and transparent communications, and 3) acknowledge contributions.



# COORDINATE ADVOCACY

Create change by identifying both the story and the counter-story for high leverage advocacy.



## 3.1

Influence policy through advocacy and funding in targeted areas.



## 3.2

Develop collaborative relationships with subject matter experts (including PWLE, elected/appointed officials, media outlets and influencers, and other external partners) to influence messaging and attention of the issue.



## 3.3

Leverage learning, influence, and resources to expand reach and increase capacity for statewide mobilization.





# BOLSTER THE WORKFORCE

Create change by supporting the current and future workforce.



4.1

Create multiple entry points into the workforce and build and maintain easy to navigate pathways for training, education, and credentialing, bolstered by incentivized, ongoing support and mentorship.



4.2

Understand the support, benefits, and structures the current workforce needs to practice their own care and compassion so they may practice care and compassion for others.




4.3


Advocate for recovery friendly workplaces that acknowledge and support the varying needs of individuals in recovery to feel safe and able to fulfill their job responsibilities.



# 2024-2029 Goals



**1.1** Position RIZE as a thought leader, connector, and convener.



**1.2** Ensure issue promotion and stakeholder engagement through an external affairs strategy.



**3.1** Promote and monitor optimal organizational readiness for sustainability and growth.



**3.2** Diversify funding model to increase revenue year over year and support implementation of the strategic business plan.



**3.3** Deliver on mission as a trusted partner and catalyst for innovation through active listening and transparency.



**3.4** Ensure equity and inclusion at the center of all dimensions of RIZE.



**2.1** Align thinking approaches to SUD policy and services.



**2.2** Create solutions through better communication and facilitation across the ecosystem and by changing social norms related to drug use, addiction, and recovery.



**2.3** Maximize impact and improve effectiveness by allocating resources, monitoring programs, and evaluating the portfolio.

# RIZE'S ROLE

RIZE operates as a sponsor and weaver of networks to grow, support, and nourish the ecosystem:

- Understands the network and the ways the involved systems, sectors, and fields interact
- Facilitates strategically important connections among network “nodes”
- Mobilizes the network for change
- Learns from and assesses the networks capabilities and opportunities for growth

# DISCUSSION

- What about these plans excites you?
- Where can we make the most impact?
- What else do we need to know/consider from your vantage point?

